

ABERDEEN - PLAT NO. 8

A PORTION OF A (P.U.D.)

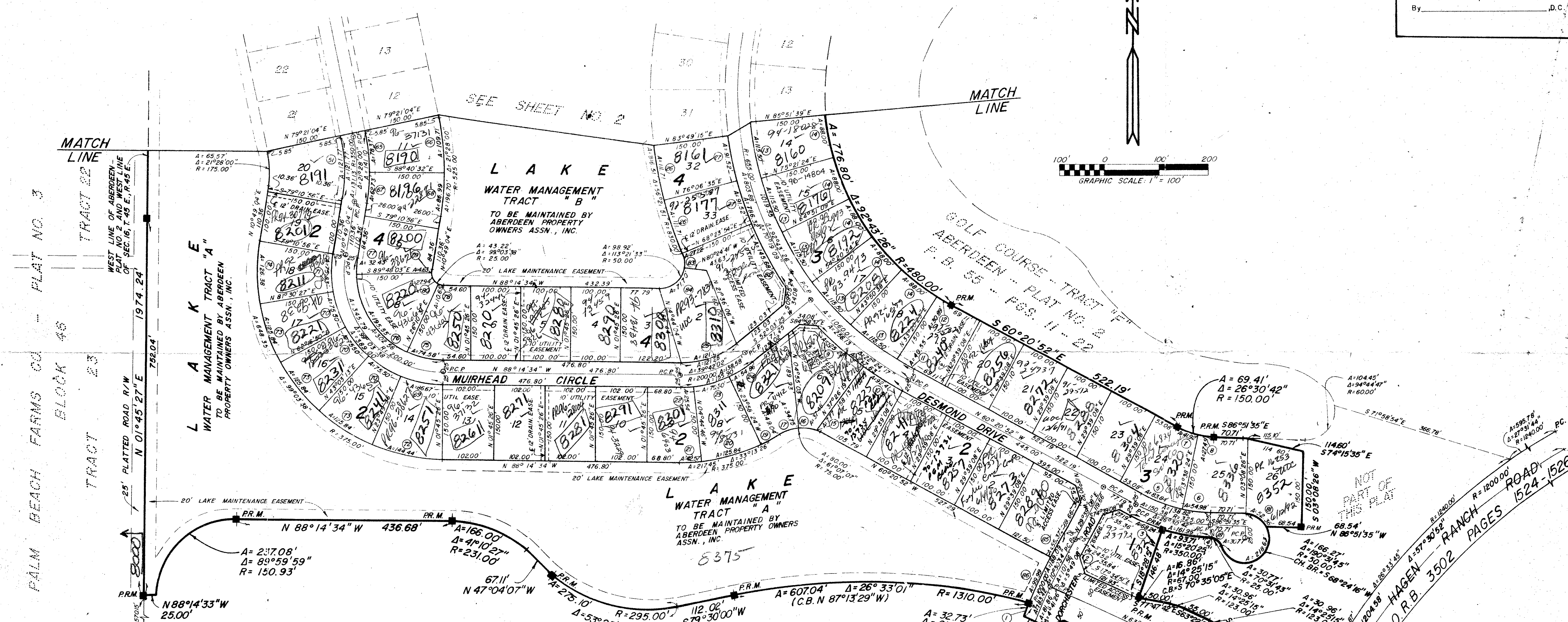
SECTION 16, TOWNSHIP 45 SOUTH, RANGE 42 EAST

BEING A REPLAT OF A PORTION OF ABERDEEN - PLAT NO. 2 AS RECORDED IN PLAT BOOK 55, PAGES 11 THRU 22 PUBLIC RECORDS OF PALM BEACH COUNTY, FLORIDA

PALM BEACH COUNTY, FLORIDA - MAY, 1988.

183

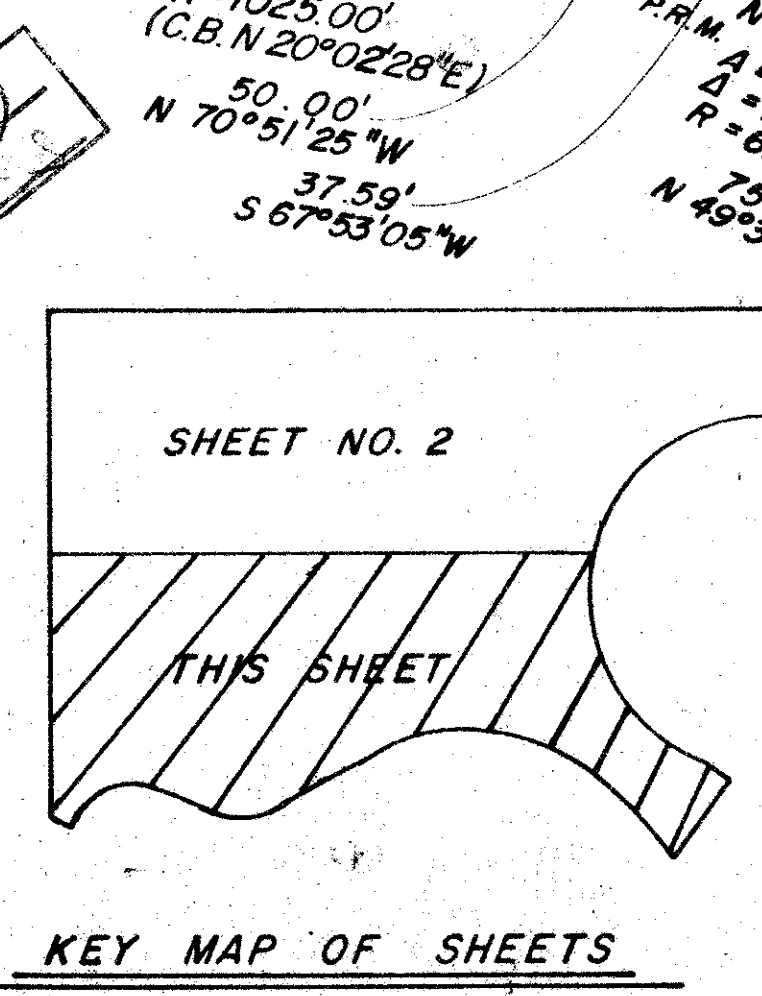
STATE OF FLORIDA
 COUNTY OF PALM BEACH
 This Plat was filed for record at _____ M.
 this _____ day of _____
 19 _____, and duly recorded in Plat Book No. _____
 on page _____
 JOHN B. DUNKLE, Clerk Circuit Court
 By _____, D.C.



169542
 SUBDIVISION: Aberdeen # 8
 BOOK: 59
 PAGE: 183
 FLOOD MAP: 185A
 ZONING: RS
 ZIP CODE: 33437
 FILED NAME: PWS

CURVE DATA

CURVE NO.	RADIUS	DELTA	ARC LENGTH	CURVE NO.	RADIUS	DELTA	ARC LENGTH	CURVE NO.	RADIUS	DELTA	ARC LENGTH
C001	1025.00'	1°49'47"	32.73'	C030	630.00'	9°00'08"	55.00'	C059	525.00'	12°47'19"	117.18'
C002	975.00'	1°26'28"	24.52'	C031	480.03'	9°00'08"	41.91'	C060	375.00'	12°47'19"	83.70'
C003	350.00'	1°10'16"	68.24'	C032	225.00'	11°28'07"	45.04'	C061	575.00'	8°52'06"	89.00'
C004	350.00'	15°20'25"	93.71'	C033	225.00'	46°09'19"	181.25'	C062	575.00'	8°52'07"	89.00'
C005	300.00'	18°00'44"	83.84'	C034	400.00'	11°28'07"	80.07'	C063	725.00'	8°52'07"	112.22'
C006	300.00'	10°29'59"	54.98'	C035	425.00'	8°00'40"	44.59'	C064	725.00'	8°52'06"	112.22'
C007	150.00'	10°00'44"	41.92'	C036	425.00'	9°27'27"	40.48'	C065	375.00'	19°18'37"	125.38'
C008	150.00'	10°29'59"	27.49'	C037	50.00'	32°43'32"	26.56'	C066	525.00'	11°58'24"	109.71'
C009	680.00'	10°39'04"	125.22'	C038	50.00'	47°01'14"	41.03'	C067	375.00'	9°29'36"	62.13'
C010	679.96'	7°47'13"	92.41'	C039	50.00'	37°38'05"	32.84'	C068	525.00'	9°29'36"	86.99'
C011	628.96'	3°41'16"	40.56'	C040	50.00'	62°37'09"	54.65'	C069	225.00'	22°04'10"	86.67'
C012	479.96'	3°41'16"	30.89'	C041	50.00'	69°01'41"	56.75'	C070	225.00'	19°13'37"	75.50'
C013	630.00'	10°30'15"	115.50'	C042	25.00'	76°29'48"	33.38'	C071	201.56'	19°18'37"	75.85'
C014	480.02'	10°30'14"	88.00'	C043	680.00'	7°42'39"	94.52'	C072	375.00'	22°04'10"	144.44'
C015	75.00'	9°56'09"	7.71'	C044	830.03'	7°42'39"	111.70'	C073	375.00'	19°13'37"	125.38'
C016	75.00'	28°38'01"	37.48'	C045	830.03'	2°23'12"	34.58'	C074	375.00'	19°18'37"	125.38'
C017	75.00'	28°32'57"	34.75'	C046	525.00'	9°24'59"	49.63'	C075	175.00'	24°25'05"	74.58'
C018	25.00'	70°31'43"	30.77'	C047	375.00'	12°45'27"	35.45'	C076	175.00'	64°01'26"	195.55'
C019	375.00'	7°29'36"	49.04'	C048	375.00'	12°45'27"	83.50'	C077	175.00'	10°37'07"	32.43'
C020	375.00'	19°13'38"	125.84'	C049	525.00'	12°45'27"	116.90'	C078	25.00'	24°25'04"	10.85'
C021	375.00'	8°30'13"	42.57'	C050	575.00'	8°52'06"	89.00'	C079	25.00'	10°37'07"	4.63'
C022	225.00'	8°30'13"	25.94'	C051	325.00'	21°28'00"	121.77'	C080	25.00'	64°01'26"	27.94'
C023	225.00'	10°13'38"	75.50'	C052	725.00'	9°52'06"	112.22'	C081	50.00'	60°00'00"	52.36'
C024	225.00'	13°58'11"	54.86'	C053	375.00'	12°45'28"	83.50'	C082	679.96'	12°16'32"	145.68'
C025	175.00'	39°42'02"	121.26'	C054	525.00'	12°45'28"	116.90'	C083	50.00'	31°11'26"	27.22'
C026	830.02'	7°42'40"	111.71'	C055	50.00'	37°51'13"	33.03'	C084	50.00'	82°10'07"	71.70'
C027	679.96'	7°42'41"	91.52'	C056	50.00'	54°31'58"	47.58'	C085	1025.00'	3°05'42"	55.37'
C028	479.99'	10°30'16"	88.00'	C057	375.00'	12°45'28"	83.50'	C086	1025.00'	8°55'20"	99.99'
C029	629.97'	10°30'16"	115.50'	C058	525.00'	12°45'28"	116.90'				



ROSSI AND MALAVASI
 ENGINEERS, INC.
 WEST PALM BEACH, FLORIDA

ABERDEEN
 PLAT NO. 8
 IN 3 SHEETS SHEET NO. 3

Date	FEBRUARY, 1988	Designed	S. WEISS	Scale		Sheet	
Drawn	D. FREDERICK	Job No.		File No.		3	of 3
Approved		Checked					

Ret. 80-153
 0279-D10
 59/183